

Vista Software Installation

NOTE: INSTALL SOFTWARE FIRST BEFORE CONNECTING DINO LITE TO PC/LAPTOP

Windows Vista

1. Place the installation CD into CD-ROM driver, the installation program should be started automatically. If the installation does not start automatically; go to the drive letter for the CD drive; open the folder and choose "AUTORUN.EXE" directly from the CD. Otherwise, please execute the AUTORUN.EXE directly from the CD.
2. Once the DinoLite window comes up (see photo 1). Select "Driver Installation" from Dino-Lite Handheld digital Microscope Installation menu screen as shown.

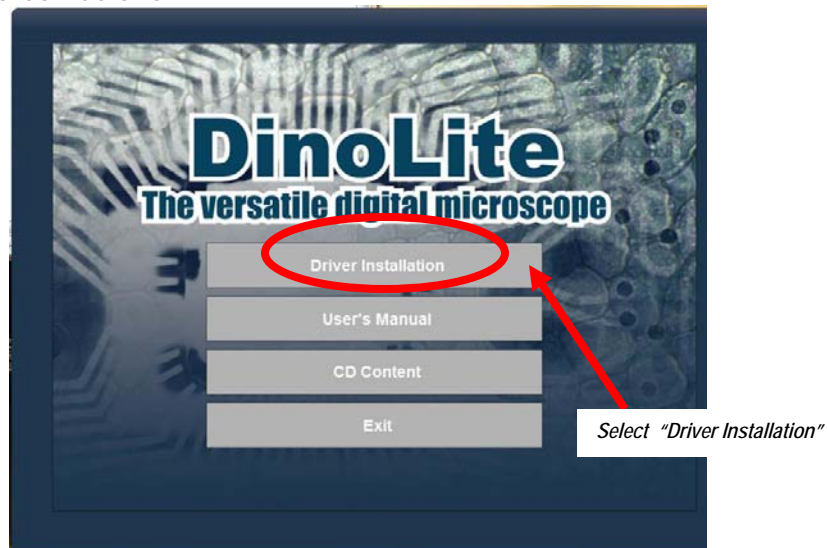


Photo 1

3. Click "Next" to continue when the following window pops up (Photo 2).

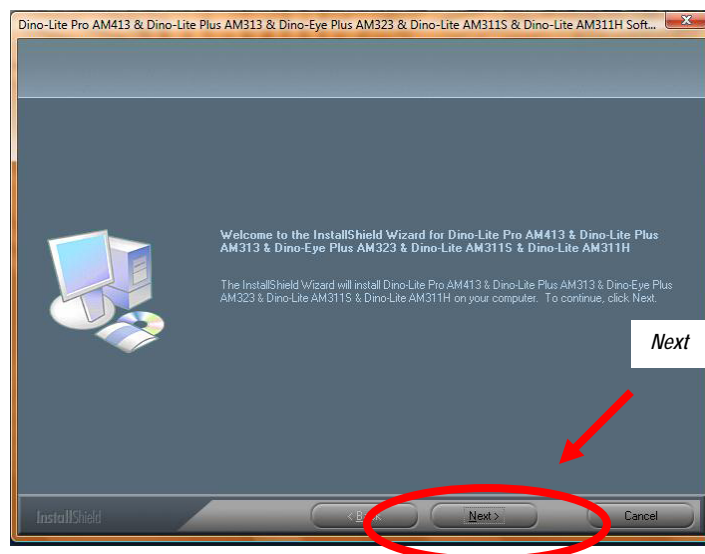
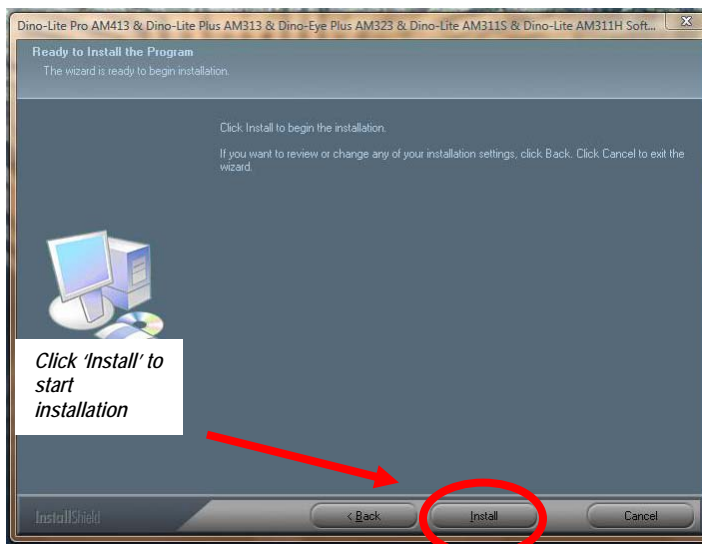
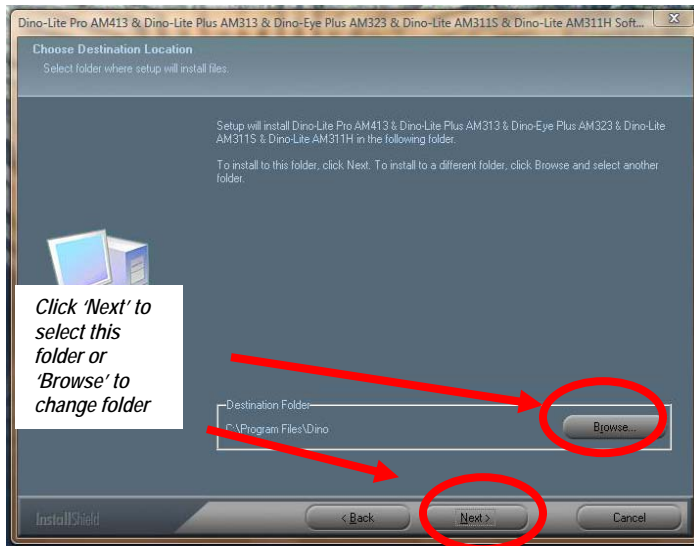
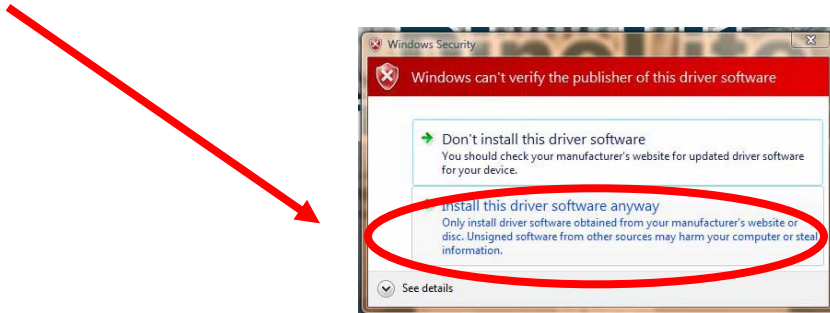


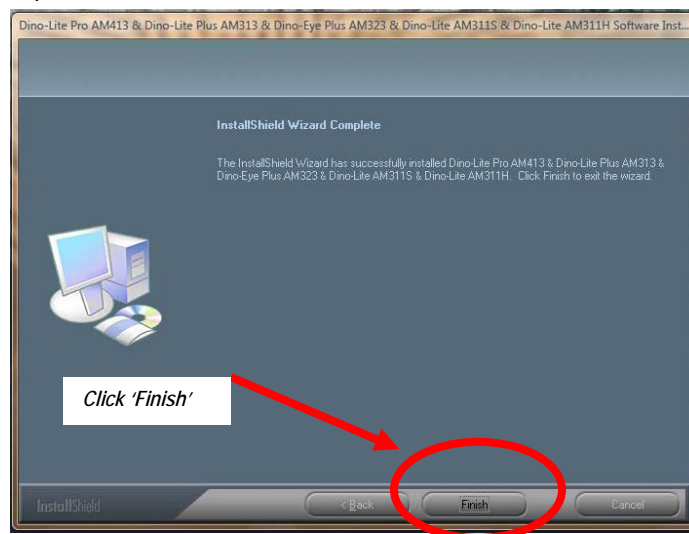
Photo 2



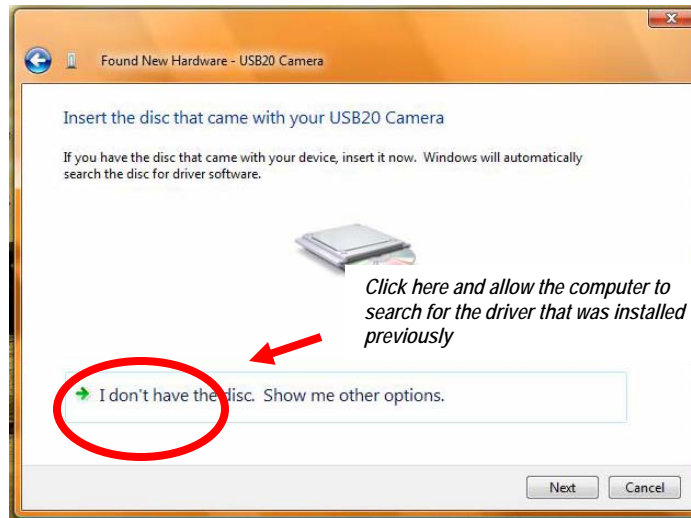
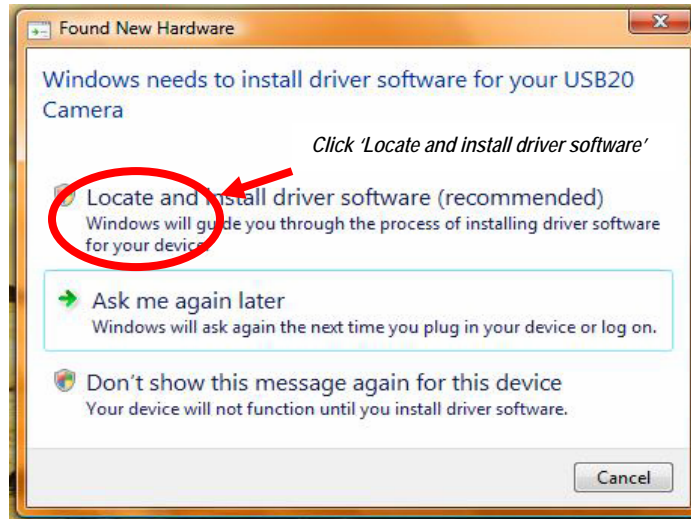
4. When the "Windows Security" warning message appears, click "Install this driver software anyway".



5. Click "Finish" to complete the installation.



6. Plug USB Cable to Dino-Lite Handheld Digital Microscope to connect with PC, "Found New Hardware Wizard" will then appear. Click "Locate and install driver software" to continue.



7. When the "Windows Security" warning message appears, click "Install this driver software anyway".

